



TECHNICAL DATA SHEET PROTECTIVE MASK / Cat.1

UNS 1 approval according to AFNOR SPEC S76-001:2020.

This mask is not a medical device according to EU/2017/745 regulation (surgical masks), or personal protective equipment according to EU/2016/425 regulation (FFP2 type filter masks).



This reusable three-layer barrier mask offers double protection against splashes when coughing, sneezing or spitting.

This technical anti-splash mask is an alternative solution to surgical masks and is one of the models reserved for category 1 non-health applications in accordance with the information note of 29/03/2020. It is intended for professionals in contact with the public (e.g. police officers, law enforcement officers, cashiers, etc.).

The fabrics and accessories are manufactured in France. All fabrics used are Oeko-Tex certified. The polyester fabric offers all-day comfort: it is very light, the mask does not retain moisture, so it can be worn for several hours without any problems (polyester fabric certified according to Oeko-Tex class 2 (skin contact)).



ITS PROPERTIES ARE REMAINING AFTER 40 WASHES.

DESIGNED AND TESTED FOR 4 HOURS ON THE CARRIER.

TECHNICAL SPECIFICATIONS

Use cases	Protection of the wearer (1)		Splash retention (2)	
		New (unwashed)	New (unwashed)	After 40 washes
Washes				
Air permeability at 100 Pa (l/m ² .s)		Not measured	179 L/m ² .s	159 L/m ² .s
Efficiency of protection against aerosols	Particle size 3µm	97%	90%	95%
	Particle size 1µm	96%	89%	Not measured

Machine wash at 60 °C for at least 30 minutes according to the official recommendations.

Otherwise, wash by hand with lukewarm water and soap.

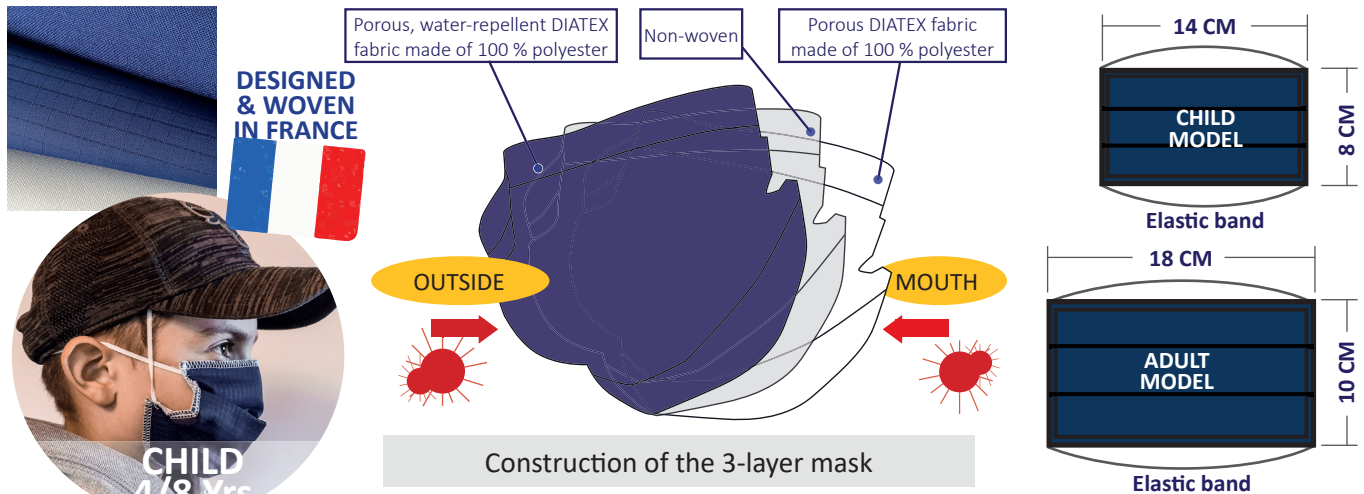
Air-dry. Don't iron. (Polyester).

(1) Use to protect the wearer: flow measured during inhalation, from outside to inside.

(2) Use to prevent exposure to airborne droplets: flow measured during exhalation, from the inside to the outside.

Material whose performance has been measured by the laboratories of DGA Maitrise NRBC and IFTH (report RP/20-2295/DGA MNRBC/2000305/NP) and which can withstand 40 washes (report 2020-05-20-145-40).

TEMPLATE AND COMPOSITION





CONDITIONS FOR THE USE OF THE PROTECTIVE MASK / Cat.1

UNS 1 approval according to the AFNOR SPEC S76-001:2020 standard.

Please note, this mask is neither a medical device within the meaning of regulation EU/2017/745 (surgical masks), or personal protective equipment within the meaning of Regulation EU/2016/425 (filter masks type FFP2).



This is a replacement protective mask that complies with UNS 1 approval according to the AFNOR SPEC S76-001:2020 standard.

Masks reserved for non-sanitary use category 1 according to the information note of 29/03/2020. These are intended for people who receive the public in the course of their professional activities (police officers, security guards, cashiers etc.). They filter at least 90 % of the particles from 3 µm. They therefore apply without restriction to category 2, the use of which is intended for persons who have occasional contact with other persons in the course of their professional activities.

This mask can be worn by all the individuals of a sub-group (company, department) or in the presence of other individuals wearing a mask of another category, when the position or working conditions require it.

Once unpacked, it is recommended that the mask be washed before first use and then allowed to air dry. Do not iron it (polyester material).

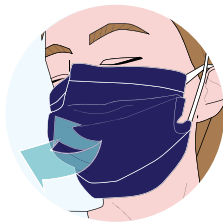
GENERAL RECOMMENDATIONS



Adjust the mask on your face: above the bridge of your nose and under your chin.



Wear the elastic bands behind your head.



Make sure you can breathe without any particular discomfort.



Once in place: Do not touch it, or manipulate it.

It is necessary that the mask is well maintained on your face.

If the elastic bands are stretched, do not use the mask.

If you feel any discomfort, do not use the mask and inform your superiors.

Change it: if removed from the face, if soiled, if wet and beyond the maximum limit of use.



4-8H

Change the mask every 4 to 8 h depending on the position occupied.



60°C

Machine wash at 60°C for at least 30 min according to the official recommendations. Otherwise, wash by hand with warm water and soap.



Air dry.



Do not iron, as this mask is made of polyester.

HYGIENE & DISTANCE GUIDELINES

Wearing a mask does not replace the current reinforced hygiene measures:



BEFORE you put on the mask

AFTER putting on the mask any manipulation removal of the reusable mask



Wash your hands with soap and water or apply an alcoholic hand rub once per hour for at least 30 seconds to be effective.

Clean and sanitize tools and common areas with a suitable spray or wipes.